

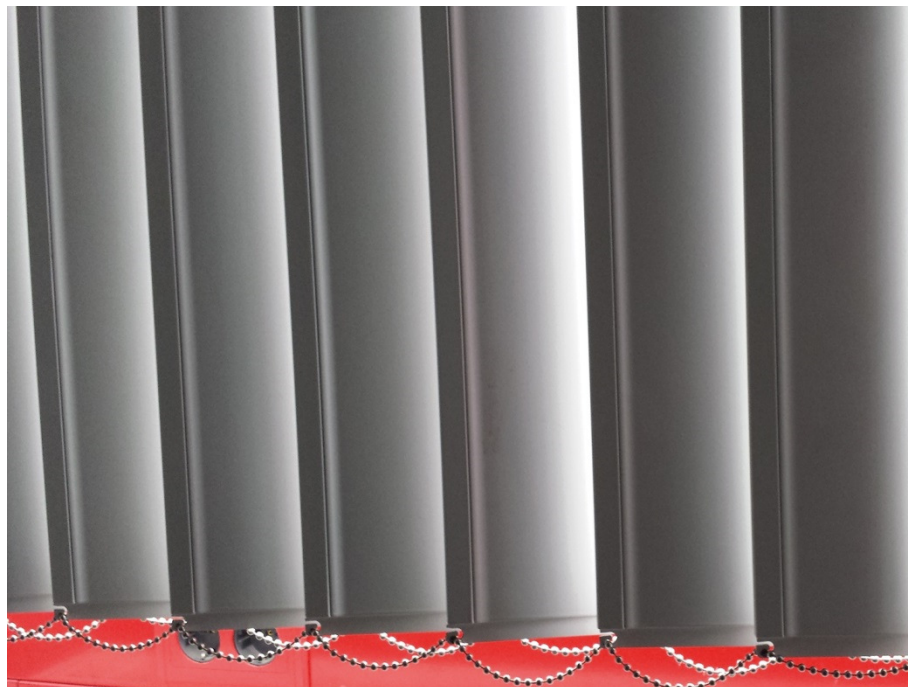
Radiation-shielding vertical blinds

exclusive products | typical MSR

Our vertical blinds for radiation protection are made of high quality aluminium. They combine ease of use (either manual, semi-electric or fully automatic) with a timeless elegance and a flexibility that goes so far that the controls are connected to the X-ray machine. And since it's custom-made, you can be sure that the partitioning will fit completely snugly.

Advantages

- Dimensions according to customer specifications
- Pb equivalance as required
- Manual or electrical operation
- Alu blinds in optically beautiful design, powder coated
- Dimensionally stable (not comparable with fabric lamellas lead rubber, PVC etc.)
- Lifetime color fastness
- Easy to clean, hygienic and fully disinfectable
- Maintenance-free system
- Blinds available in all RAL colors, standard 9016
- Coupling with the x-ray machine via potential-free contact possible



Overview features:

Variants	Manual	electrical
Constructions with Pb equivalents up to 4.0 mm	✓	✓
Length of blind up to 3.300 mm	✓	✓
Window width with one rail up to 6.00 m	✓	✓
Row mounting endlessly long	✓	✓
Maintenance-free	✓	✓
Can be sterilized & disinfected	✓	✓
Construction in high quality aluminium	✓	✓
Available with and without substructure	✓	✓
As a self-assembly-kit or including installation by MSR	✓	✓
Window niche assembly	✓	✓
Can be integrated in x-ceilings	✓	✓
LED technology		✓
Light barriers monitoring		✓
Monitoring of the position of the first blind		✓
Potential-free contact output	✓	✓
Park position freely definable (right, left or 50% right/50% left)	✓	✓
Position of control unit definable right/left to turn on an to or both functions one-sided	✓	✓

Technical information:

Construction vertically with upper curtain track rail

- Curtain track rail made of extruded special aluminium profile with a max. point load of 7 kN per running meter
- White powder-coated RAL 9016

Aluminium blinds with lead inlet

- Lead inlet not visible – safe and rigid blind mounting by spring-loaded safety bolts
- Easy to clean and to sterilize (no lead abrasion)
- Straight, no pliable suspension
- Blind powder-coated, color white RAL 9016 (any other RAL color possible)
- International blind width 127 mm, overlap approx. 15 mm
- Aluminium master runner fitted with safety ball bearing
- Stainless steel shaft for blind mounting, no plastic components
- Trouble-free operation
- Overlap of the protective window = + 100 mm per site or niche assembly



Use / drive:

Manual operation

On-off and turning are made by means of a manually operated crank.

Semi-automatic, electronically controlled:

Closing of the system is made by means of a manually operated crank.

Rotation of the blinds is made by means of an electric-turning drive and push-buttons through the control unit.

Full-automatic:

On-off and turning are made by means of an electric motor, released by push-buttons.

The control unit is ready for connection and is installed in a radius of 5m from the curtain at the concrete ceiling. A socket with 230 V 50 Hz must be provided customer-sided. The connection between the control unit and the operator unit needs to be done customer-sided.

